



Alif Village Limited

List of Sister Concern

- [Alif Embroidery Village Ltd.](#)
- [Lam Mim Associates.](#)
- [Mehnaz Styles & Craft Ltd.](#)
- [Capital Impex Co. Bd. Ltd.](#)
- [Alif Tours & Travels.](#)
- [Tajmahal Barbecue Restaurant & Resort](#)
- [Alif Properties.](#)
- [Sabrang Bay Resort Ltd.](#)
- [Fire & Power Equipment.](#)





Alif Village Limited

Welcome To Alif Village Ltd.



Introduction

Alif Village Ltd. started their business journey with Embroidery in 1991. In 2001 It established a Screen Print Unit and their after in 2011 set-up a state of the art Garment Factory with sophisticated Sewing equipment .Thereafter In 2012 it Set-up an Auto Print Industry with World Famous Auto Print Equipment targeting Zero Discharge by the year 2020 to maintain the Eco-Systems for safety highlighting their commitment to the Environment

Mission and Vision of Alif village

Our Vision is to realize the optimum production of Quality goods and services possible strictly by Ethical and Moral standards at a minimal cost to the Environment, ensuring Optimum Benefits to both, the Manufacturer and Buyer alike, complying with all the Stake Holder's demand of Quality without any Compromise. We utilize advanced technology in all aspects of our operations to attain Excellence by supplying a Quality guilt free product.

Core Strategy Of Alif Village

- A truly international outlook for exporting.
- A long-term commitment to export.
- A strategic approach to the development of new export markets.
- Credibility and long-term relationships with our partners.
- An internationally renowned reputation for quality.

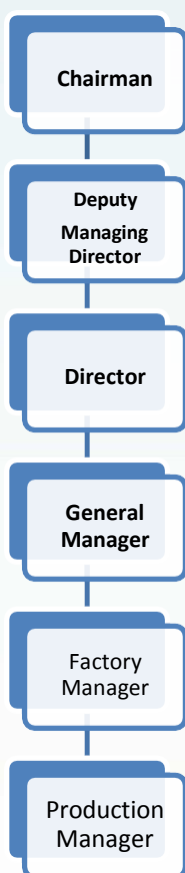


Commitment of Zero Discharge of Hazardous:

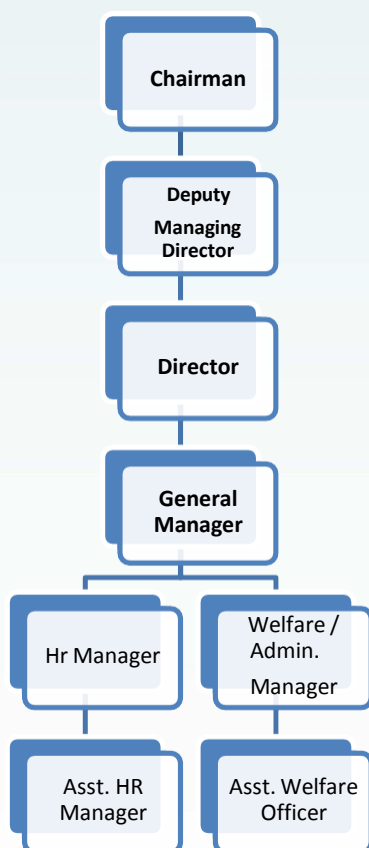
Commitment towards Zero Discharge of Hazardous Chemicals: Our Commitment is to lead the way towards Zero Discharge of hazardous chemicals for all products across all pathways in our supply chain by 2020. We follow the vision of protecting our World and its precious resources under the dynamic leadership of our company’s Chairman and Managing Director Al Haj Akter Hossain Rana.

ORGANOGRAM

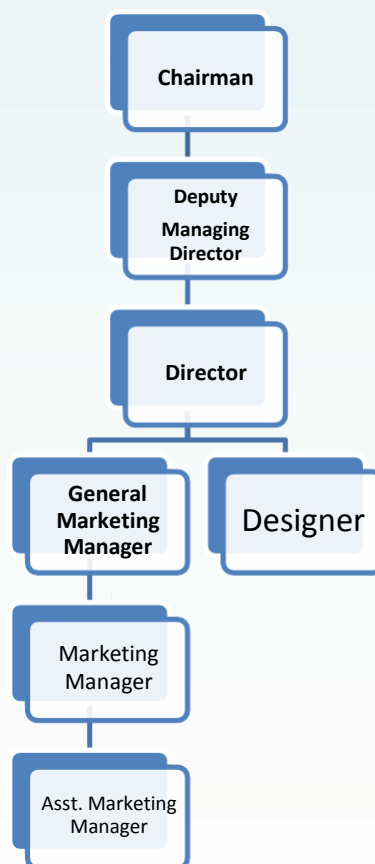
Production



Admin/HR



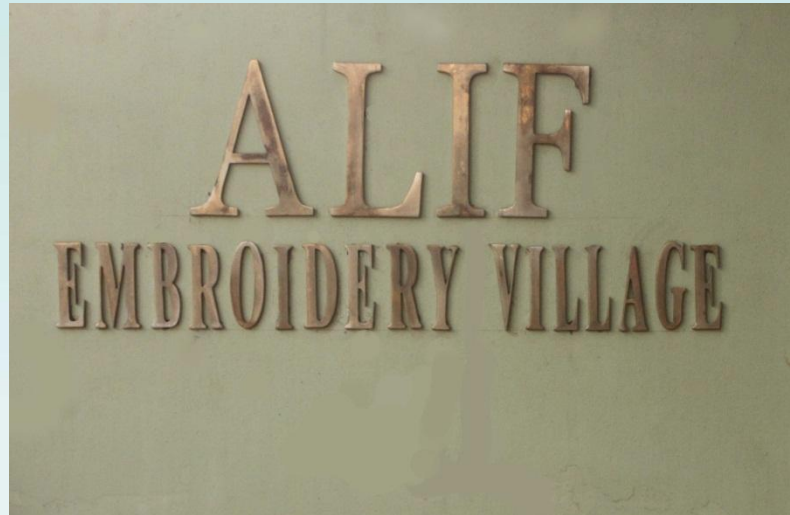
Development/Marketing





Alif Village Limited

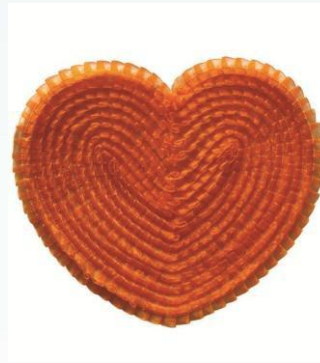
WELCOME TO ALIF EMBROIDERY VILLAGE LTD.



Type Of Project : Complete Solution of 100% Export Oriented Embroidery Plant.
Factory location : Bangabandhu Road, Tonga Bari, Ashulia, Savar, Dhaka.
Area : 51,000 Square Ft

In House Facilities

- It is one of the country largest Embroidery plant working with prestigious buyers such as H&M, GAP, Zara, American Eagles, Nike, C&A, Disney, Puma etc.





Alif Village Limited

Embroidery Section



Embroidery Machinery

Sl.No	Type of Machine	Model Emb. Space	Qty
01	Tajima	TMEAD-G920 680*330	29
02	Jintel	GG920 680*330	50
03	Tang	GG1220 680*330	30
04	Hiking	GG910 680*400	06

Sequin Embroidery Machine

Brand
Jintel/Hiking/Tang

Description
3 to 4 color sequin

Qty
30 pcs machine





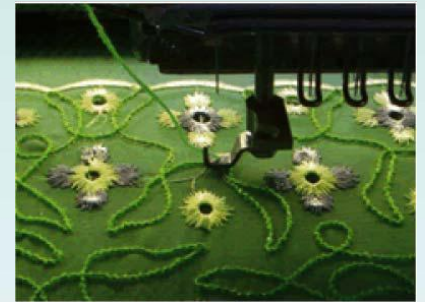
Alif Village Limited

Chenille Embroidery Machine

**Brand
Tang**

**Description
1 to multicolor design**

**Qty
2 pcs machine**



CORDING/TAPING/LACE EMBROIDERY MACHINE

**Brand
Hiking**

**Description
1 to multicolor design**

**Qty
2 pcs machine**



Production Capacity

Item	Qty(Per Day)
Embroidery	70000-80000 Pcs/Day
Appliqué Embroidery	70000-80000 Pcs/Day
1 - 4 Color Sequin Embroidery	20000-25000 pcs/Day
1 - 4 Hanging Sequin Embroidery	20000-25000 pcs/Day
Cording Embroidery	5000-6000 pcs/Day
Taping Embroidery	5000-6000 pcs/Day
Chenille / Terry Embroidery	5000-6000 pcs/Day
Appliqué Laser Embroidery	30000-35000 pcs/Day
Appliqué Dyes Embroidery	100000-150000 pcs/Day

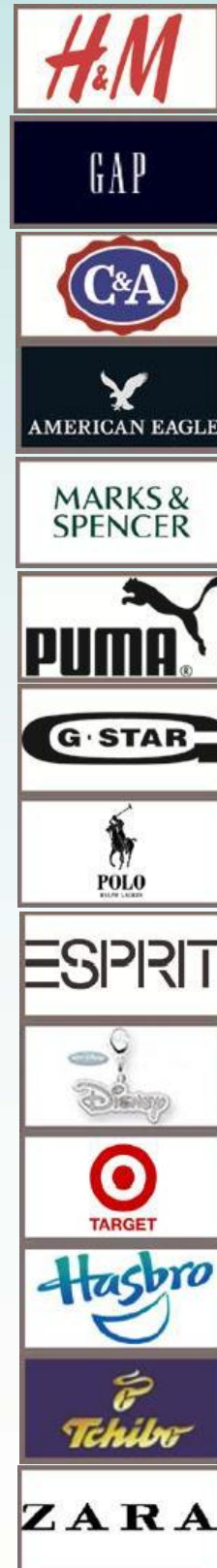
Delivery Vehicles: 06 Covered Vans, 02 Microbuses always available for any pickup and delivery



Alif Village Limited

CURRENT BUYERS LIST

- ❖ H&M
- ❖ Gap
- ❖ C&A
- ❖ American Eagle
- ❖ Marks & Spencer
- ❖ Puma
- ❖ G-Star
- ❖ Polo Ralph Lauren
- ❖ Esprit
- ❖ Disney
- ❖ Target
- ❖ Hasbro
- ❖ Tchibo
- ❖ Zara





Alif Village Limited

Contact Persons

Md. AkterHossainRana

Chairman

Mob No: +880 1711 592333

E-mail: rana@aliflammim-bd.com

Md. Omar Faroque Hafiz

Deputy Managing Director

Mobile: +880 01713143161

E-mail: hafiz@aliflammim-bd.com

Abu Md. Baharul Belal

Director (Marketing & Planning)

Mobile: +8801799993735

E-mail: belal@aliflammim-bd.com

NusratJahan Khan

General Manager (Marketing)

Mobile: +88 01713143167

E-mail: alif@aliflammim-bd.com

Certificates

- ❖ Oeko-Tex Certificate.
- ❖ Environment Certificate (ETP).
- ❖ BERC (Bangladesh Energy Regulatory Commission).
- ❖ Organic Cotton.



Alif Village Limited

WELCOME TO LAM MIM ASSOCIATES



Type & Area

Type Of Project : 100% Export Oriented Printing Industry.
Factory location : Unit 01 (Collage Road, Ashulia, Savar Dhaka)
 Unit 02 (Bangabandhu Road, Tonga Bari, Ashulia, Savar, Dhaka.)
Status : Ownership & Private Ltd. Company.
Area : Unit 01 (19,000 Square Fit) Unit 02 (168,534 Square Ft.)

In House Facilities

It is one of the country's largest and technologically advanced printing plant working with prestigious buyers such as H&M, GAP, Zara, American Eagle, Nike, C&A, Disney, and Puma etc.



Pigment Print



CMYK Print



Crack Print



Discharge



Dotted Print



Flock Print



Florescent



Foil Print



Gel Print



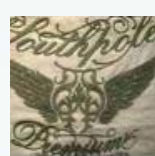
Glass Print



Glitter Print



Gradient



High-density



Metallic



Neon print



Pearl Print



Pigment print



Plastic Print



Puff Print



Rubber print



Silicon Print

Printing Tables Details

S/N	Name	Length	Width	Unit 01	Unit 02
1	Manual Table	60fit	5fit	18	120
2	Auto Machine				11



Alif Village Limited

Print Section



Printing Machineries

SL.No	Type Of Machine	QTY
01	Curing Machine	10
02	Heat Seal Machine	15
03	Flock Machine	50
04	Heat Air Dryer	300
05	Camera table	10
06	Color Mixer	10
07	Boss Dryer	500
08	Screen Tension Machine	06
09	Design washes Spray	06
10	Spray Machine	24

Production Capacity:

- ❖ Production Capacity of All kinds of Prints between 250,000-300,000 pcs / Day.
- ❖ **Delivery Vehicles** : 06 Covered Vans, 02 Microbuses always available for any pickup and delivery



Alif Village Limited

In House Laboratory





Current Buyers List

❖ H&M



❖ Gap



❖ C&A



❖ American Eagle



❖ Marks & Spencer



❖ Puma



❖ G-Star



❖ Polo Ralph Lauren



❖ Esprit



❖ Disney



❖ Target



❖ Hasbro



❖ Tchibo



❖ Primark



Alif Village Limited

- ❖ Tema
- ❖ Lerros
- ❖ Kappahl
- ❖ Mother Care
- ❖ Springfield
- ❖ Zara



Our Transfer Printing / Sticker



Roland 8 Color Germany



Alif Village Limited



Heidelberg 4 Color Germany



Atma

Capacity:
60000-100000 (Demand on Size & Color)



Alif Village Limited

Sublimation Digital Print

15 Unit Machine



Mimaki Japan



Sunika Spain

Capacity:

30000-40000 /Day. Depends on Size & Color

Heat Press



Capacity:

All over Roll to Roll Sublimation 10000-15000 /Day. (Depends on Size & Color)

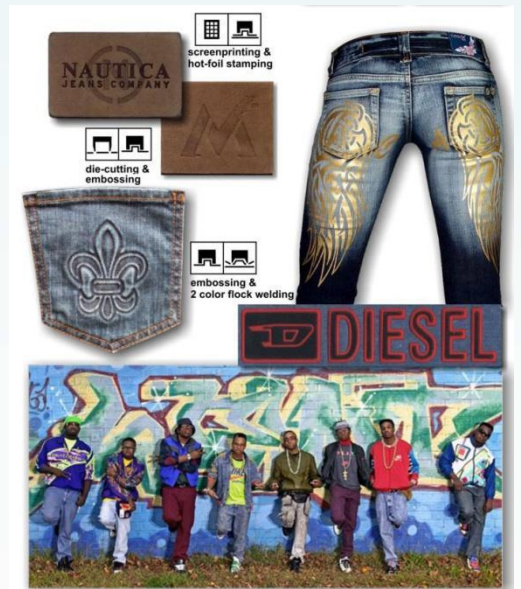


Alif Village Limited

Our Invention

Embossing & laser Engraving:

Product: Fleece, Jeans, Knit, ETC.



User Name: Adidas, Audi, BMW, Chelsea, Fiat, Ford, Ferrari, Gap, Nike, H&M, Toyota, Reebok, Rolex, Suzuki, Nissan, Polo, Honda, ETC.

Capacity: 10000-15000pc / Day.



Contact Persons

Md. AkterHossainRana

Chairman

Mob No: +880 1711 592333

E-mail: rana@aliflammim-bd.com

Md. Omar Faroque Hafiz

Deputy Managing Director

Mobile: +880 01713143161

E-mail: hafiz@aliflammim-bd.com

Abu Md. Baharul Belal

Director (Marketing & Planning)

Mobile: +8801799993735

E-mail: belal@aliflammim-bd.com

NusratJahan Khan

General Manager (Marketing)

Mobile: +88 01713143167

E-mail: alif@aliflammim-bd.com



WELCOME TO MEHNAZ STYLES & CRAFT LTD



Type Of Project: Complete Solution of 100% Export Oriented Garments Manufacturer.
A Concern of Alif Village
Factory location : Bangabandhu Road, Tonga Bari, Ashulia, Savar, Dhaka.
Area : 99,950 Square Ft

Product Range

Our product range includes garments made of woven fabric for all seasons and all range groups.

- We handle all kind of woven fabrics up to 10 ounces such as voile, cambric, poplin (y/d & Solid) and various kinds of cotton blends including denim's.
- Men, women, children and infants.
- All seasons.
- Variety of sizes ranging from petite to maternity & plus size.
- Fashion.



Stores



Cutting Section



Sewing Section



Sewing Section



Finishing Iron Section



Finishing Section (Final QC line)



Fabric Inspection Machine



Pining Table (For Check Fabric)



Band Knife Machine

Production Facilities

Cutting & fusing

- GGT CAD system for development of patterns and markers.
- Computerized fabric spreading machines.
- Pinning table for check fabric front placket cutting.
- Placket cutting machine.
- Rotary and conveyor belt fusing machines.
- Hydraulic cutting devices for cutting precision.

Sewing & Finishing

- 16 lines with 717 set productions machines & 117 set Auxiliary Machine.
- Total production Capacity of 350,000 units per month.
- All UBT machines.
- Special computerized machines.
- Automatic blocking machines.
- Cuff & collar forming machines along with collar turning devices.
- Pneumatic folding tables.
- Needle detectors.
- Neck press machines.
- In process quality assurance system.



Fusing Machine



Front Placket Fusing Machine



Fusing Machine



Cuff Blocking Machine



Collar Turning & Blocking Machine



Mini Fusing Machine



Neck Press Machine



Pneumatic Snap Button Machine



Thread Sucking machine



Button Hole Section



Pull Test Machine



Spot Removing Machine



Light Box



Folding Table



Needle Detector Machine

Quality Control POLICY

Mehnaz is committed to:

- Consistently maintaining a high level of quality by understanding and exceeding our customers' expectations.
- Delivering defect free, competitive products and services on time.
- Periodically reviewing our performances and continuing to find ways for constant improvement.



Alif Village Limited

Quality Assurance System

- 4 point system fabric inspections.
- 100 % roll shrinkage test.
- Shrinkage wise rolls segregation and cutting system.
- Shade blanket made out of 100% of the rolls and segregated shade wise.
- Shade wise fabric cutting plan.
- End to End /edge to edge tubing made for the shading control system.
- 100% cutting parts panel check and replacement system.
- Spreading and cutting quality control system.
- 2.5 AQL accessories inspections system.
- Fusing and its parameters testing procedures.
- Pilot runs inspections.
- In process roving QC auditing system.
- Daily sewing line process defect record & review system.
- Finishing section 100% garment inside and outside process check system.
- Before folding 100% garment measurement check.
- 100% inspection of all merchandise.
- AQL Final Statistical Audit of finished goods.
- Metal free zone packing with needle detector machines.
- Documentation of all above mentioned procedures.

Product safety

- Broken needle control system
- Pull test system
- Nickel test system
- Ferrous test system
- Mould test system
- Needle detector system
- Fusing machine calibration report system

Products Manufactured

Men's Item:





Ladies' Item:



Girl's Item:



Boy's Item:



List Of Machinery

Name of machine	Brand	Quantity(Set)
Single Needle Lock stitch (UBT) Machine	Juki	465
Single Needle Lock Stitch Needle feed m/c	Juki	12
Edge cutter (Vertical Trimmer)	Juki	22
Double Needle Lock stitch Machine (with puller)	Juki	43
Double Needle chain stitch (with puller)	Juki	29
Bar tack machine (computerized)	Juki	18
Button stitch machine (computerized)	Juki	13
Button hole machine (computerized)	Juki	12
Over lock (5Thread)	Juki	63
Feed of the arm (with puller)	Juki	24
Kansai Special 11 Needle	Kansai	16
TOTAL >>>		717



Auxiliary Machines

Name of Machines	Brand	Quantity(Set)
Top fusing press machine	Hashima	1
Fusing machine (Front Placket)	Ngai shing	1
Placket & Pocket creasing machine	Osima	1
Pneumatic snap attaching machine	Ngai shing	4
Cuff pressing machine	Ngai shing	2
Collar trimming / turning & Blocking machine	Ngai shing	2
Band Knife machine	Kaiyu	1
Fabric Cutting machine 8"	Km	3
Fabric Cutting machine 10"	Km	2
Vacuum Table (Finishing)	Kaiyu	15
Vacuum Table {Sewing}	Kaiyu	30
Folding Table	Luna	5
Sport removing gun machine	Kaiyu	1
End cutter	Eastman	2
Thread sucking machine	Kaiyu	1
Neck Press Machine	Nagai	2
Fabric Inspection Machine	Oshima	1
PULL Test Machine	Saf guard	1
Cutting Table (6'-80')	China	4
Pinning table	Ngai shing	1
Placket Cutting Machine	Ngai shing	1
Needle Detector machine	Lock	1
Washing machine	Electrolux	1
Dryer	Electrolux	1
Light box machine	Verivide	1
Compressor	Atlas copco	1
Boiler	Mele	1
GENERATOR 760 KVA	Cummins	1
Auto Cad	G G T	1
AUXILIARY TOTAL >>>		89

Production Capacity

Total production capacity: 350,000 unit per month.



Alif Village Limited

List Of Present Customers

- Target Store USA
- H&M
- C&A
- Peter England
- Tesco



Facilities Presently Approved By as Under

- Target Store USA
- H&M
- Sedex
- Gap (Pass by Vendor through)
- M&S
- BSI

Contact Information

Anil Devraj Raw

Chairman

Mob No: +880 1711 546772

E-mail: anil@mehnaz-styles.com

AkterHossainRana

Managing Director

Mob No: +880 1711 592333

E-mail: rana@aliflammim-bd.com

AftabAltafSayed

Director

Mob No: +880 1730 300964

E-mail: aftab@mehnaz-styles.com

Sunil Mukhi

Director

Mob No: +880 1774 522468

E-mail: sunil@mehnaz-styles.com

Md. Anowar-ul Islam

Director

Mob No: +880 1713 143 199

E-mail: anowarul@mehnaz-styles.com

[1st page](#)



WELCOME TO CAPITAL IMPEX CO. BD. LTD

Vision: To provide a 360 degree solution to our clients

Mission: To supply our clients with superior technology along with durability and excellence.

Capital Impex was setup in 1992 with a soul purpose of distributing exclusive textile machineries among the Bangladeshi garments industry. We have sold over \$60 million worth of embroidery machineries, \$ 4.2 million worth of laser machines and \$30 million worth of dyeing machines. We always focused on importing superior technology so that our clients always have a competitive advantage in the industry.

We are a sister concern of Alif Village Ltd. which owns one of the largest embroidery factory in the country. All the machines sold here are also used in our factory. So we can personally vouch for these machines. These machines are used in production for buyers like H&M, Marks & Spencer, GAP etc.

We have 15 well trained technical and mechanical staff working round the clock to meet your needs. We have a strong sales team of 7 to assist you when choosing the perfect product of your need.

Location

Plot#29,31KabiFaruqueSarani, Nikunja-2 Dhaka-1229, Bangladesh, Tel: +88 02 8900519, 8900521, Fax: +88 02 8916598.

Nature of Business

Capital Impex Co. BD. Ltd. Is An 100 % import business whereby we import many Brands of Embroidery & Laser Machine.



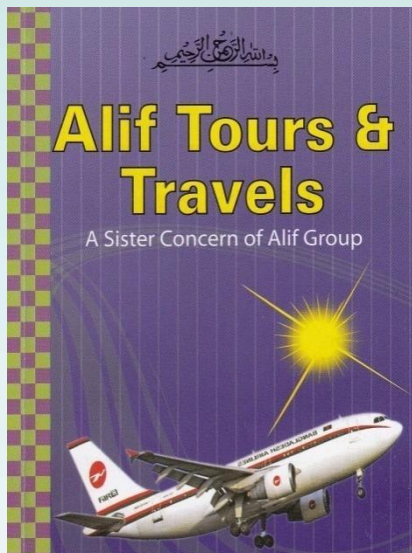
Alif Village Limited





Alif Village Limited

WELCOME TO ALIF TOURS & TRAVELS



Type: A Tours & Travels Company for any destination worldwide .

Location: Plot#29,31 Kabi Faruque Sarani, Nikunja-2 Dhaka-1229, Bangladesh, Tel: +88 02 8900521, Ext: +110, 111, Mob: +880 1718 514328, +880 1712 921026, E-mail-rafique@aliflammim-bd.com.

Tour Packaging World Wide Including Hotel Booking & Umrah.

We Accept:



24 Hours Hotline Support +880 1712 514329

Our Services

- ❖ **International Air Ticket**
- ❖ **Bangladesh Domestic Air Ticket**

Dhaka – Jessore	Dhaka – Barisal
Dhaka – Chittagong	Dhaka – Sylhet
Dhaka – Cox's-Bazar	Dhaka – Saidpur
Dhaka – Rajshahi	

- ❖ **Indian Domestic Air Ticket**

Kolkata – Delhi	Kolkata – Hyderabad
Kolkata – Chennai	Kolkata – Mumbai
Kolkata – Jaipur	Kolkata – Bangalore
Kolkata – Ahmedabad	



Alif Village Limited

❖ Indian Rail Ticket

Kolkata – Delhi	Kolkata – Hyderabad
Kolkata –Chennai	Kolkata –Mumbai
Kolkata –Jaipur	Kolkata –Bangalore
Kolkata – Velore	Kolkata –Shiliguri
Kolkata – Azmir	Kolkata – Manali
Kolkata –Kanpur	Kolkata –Kashmir

❖ Domestic Package Tour

Cox's-Bazar	Foy's Lake Chittagong
Bandorban	Rangamati
Sreemongal	Sylhet
Kuakata	Sundarban

Alif Tours & Travels





Alif Village Limited

WELCOME TO TAJMAHAL BARBECUE RESTAURANT & RESORT



Introduction

Tajmahal Resorts Welcomes you to Dhaka - your home away from home
Relax in any one of our spacious guest rooms and feel the difference as you share the large open spaces in natural surroundings situated by the river Turag.

Location

Conveniently and centrally located in close proximity to the Savar EPZ, BISIC and Gazipur industrial area.

Also adjacent to the Diplomatic Zone & Shopping arcade at main approach road of Uttara, Dhaka. The Resort is only 15 minutes drive from the Hazrat Shah jalal international Airport & Railway Station.

Guest Room Tariff

Executive Queen Bed	US \$ 60++
Super Deluxe King Bed	US \$ 80++
Tajmahal Deluxe Suite	US \$ 150++



Alif Village Limited

TAJMAHAL BARBECUE RESTAURANT & RESORT



Tajmahal Duplex Suite



Restaurant

100 persons capacity restaurant offers you a selection of International, Thai, Indian & Chinese dishes in addition to round the clock room service.



Swimming Pool



Thai Corner

BANGKOK STYLE TOM YAM
SEAFOOD PAPAIA SALAD
PRAWN - STEAMFISH
BANGKOK
THAI SEAFOOD
TOMYAM PRAWN

Our conference room can arrange meeting with an accommodation of 60 people. You can have your family ceremony in grand style.

Our experts are ready to serve you the best



BANQUET HALL

We Can Accommodate 60 Guest in our Banquet Hall, Available for your Meeting of Conference.

Banquet Hall US\$ 250

BUSINESS CENTER

Well Equipped Business Center Including PC, Wi-Fi Internet Connection, Photocopy, Fax, Scanner & All Secretarial Support.

COMPLEMENTARY SERVICES

- Daily Newspaper
- Breakfast
- Welcome Drinks
- Wi-Fi Internet Connection in Room
- All Local Telephone Calls



Alif Village Limited

Business Center

Well equipped Business center including PC, Wi-Fi, Internet Connection, Photocopy, Fax, Scanner & complete secretarial support.

Complementary Service

- Newspaper.
- Breakfast.
- Welcome Drinks.
- Wi-Fi Internet Connection in room.
- All local telephone calls.

Other Service & Facilities

- Safety Deposit Box at reception.
- 24 Hours Security Service.
- 24 Hours Hot & Cold water.
- Uninterrupted Power Supply.
- IDD Telephone System in every room.
- Round the clock room service.
- Laundry service.
- We accept all major credit cards(master & visa).
- 90 Channel Satellite connected cable line with LCD Television.



Alif Village Limited

WELCOME TO SABRANG BAY RESORT LTD

Location

East Civics road, Teknaf.

Type

Sabrang Bay Resort Ltd. is a Tourism Resort Development Company which is currently undergoing development.

WELCOME TO ALIF PROPERTIES

Location

Khilkhate 2, Dumni, Dhaka

Type

Alif Properties is a Property Development Business.



FIRE & POWER EQUIPMENT.

Floor Wise Fire Equipment List

S/N	Name of Equipment	Quantity
1.	Fire Blanket	2pcs
2.	Helmet	8pcs
3.	Hand Gloves	8pcs
4.	Stretcher	2pcs
5.	Lock Cutter	2pcs
6.	Hook	2pcs
7.	Bitter	2pcs
8.	Shovel	2pcs
9.	Bucket	8pcs
10.	Bucket Stand	2pcs
11.	Gas Mask	4pcs
12.	Gumboot	3pair
13.	Gong Bell	1pcs
14.	Rope	100fit
15.	Fire Alarm Switch	3pcs
16.	Emergency Light	8pcs
17.	Exit Light Box	4pcs
18.	Smoke Detector	8pcs
19.	First Aid Box	2pcs
20.	Fire Host rill	
21.	Fire Hydrant Point	
22.	Fire Sprinkler	





Power Equipment

- Gas Generator 760 KVA
- Diesel Generator 250 KVA
- REB 630 KVA
- Solar Panel 02 KVA
- Compressors





Alif Village Limited

OUR SOCIAL ACTIVITIES

- **MehnazHossainMim Ideal College.**



- **Begum Fazilatunnesa Kindergarten & School.**



- **Begum Fazilatunnesa Norania Hafizia Madrasha.**

