



ALIF VILLAGE LTD

ALIF
VILLAGE

INTEGRATED APPAREL SOLUTIONS
FROM SEWING TO EMBROIDERY, PRINTING &
WASHING TRUSTED WORLDWIDE SINCE 1991

WWW.ALMBD.COM

Our Story

In 1991, a small embroidery venture in Dhaka began a journey that would grow into what we know today as **Alif Village Ltd.** It started with just a few machines and a small team, united by hard work, skill, and a dream to create something lasting.

From those early roots, we have grown step by step into a fully integrated apparel manufacturing group, now spread across more than 300,000 ft² of modern production space. Today, all key processes — Knitwear Garment Sewing, High-Precision Embroidery, Sustainable Screen Printing, Swiss-tech Lace Production, and Garment Washing & Dyeing work side by side to deliver complete apparel solutions under one roof.

We are built on efficiency, responsibility, and teamwork, helping fashion brands around the world bring their ideas to life with quality they can trust. Now joined by the second generation, Alif Village Ltd. remains true to its original values excellence, honesty, innovation, and care, proudly serving global fashion and retail clients who trust us year after year.



Mission

To deliver integrated, innovative, and sustainable solutions across apparel, lifestyle, and allied industries — uniting craftsmanship, technology, and responsibility to create value for our global partners and communities.

Vision

To be a trusted global enterprise from Bangladesh, leading in apparel manufacturing and diversified solution recognized for excellence, sustainability, and innovation while shaping a stronger role for Bangladesh in the world economy.

Value

Dedication to excellence, sustainability, and innovation, creating value while caring for people and planet.

CHAIRMAN's Message

When I founded Alif Village Ltd. in 1991, I could only imagine the journey ahead. From those modest beginnings, through hard work, determination, and the support of a dedicated team, we have grown into a diversified apparel group serving clients worldwide.

Today, we stand as a fully integrated manufacturing group, offering complete solutions in garments, value addition, and textile processing. Yet, what has never changed are our guiding principles — Quality, Commitment, and Responsibility — values that shape every decision and every creation we bring to life.

I take pride not only in what we produce, but also in the people and partnerships that make it possible. Looking back, I am grateful for every challenge and every achievement. Looking forward, I am inspired by the opportunities to grow, innovate, and create lasting value together.

Thank you for being part of our journey.

Welcome to Alif Village Ltd.

Akter Hossain Rana

Chairman & Managing Director

Message From Deputy Managing Director

At Alif Village Ltd., we firmly believe that true progress stems from collaboration, unwavering dedication, and a unified vision. As Deputy Managing Director, I take great pride in contributing to our ongoing journey of innovation and excellence.

Working alongside our talented and committed team, we remain focused on achieving the highest standards of quality and service, with sustainability and social responsibility deeply embedded in everything we do.

I look forward to strengthening our partnerships and collaborating closely with colleagues as we continue to grow, evolve, and deliver lasting value.

Thank you for your continued trust and support.

Warm regards,

Omar Faroque Hafiz

Deputy Managing Director

Alif Village Ltd.

Message from Director

As part of the next generation at Alif Village Ltd., I feel honored to continue a legacy founded on hard work, trust, and innovation. We remain dedicated to embracing modern practices and sustainable growth as we adapt to the changing needs of our global partners.



While staying true to our core values, I am excited to bring fresh ideas and perspectives that help us stay competitive and ready for the future.

Thank you sincerely for being part of our journey.

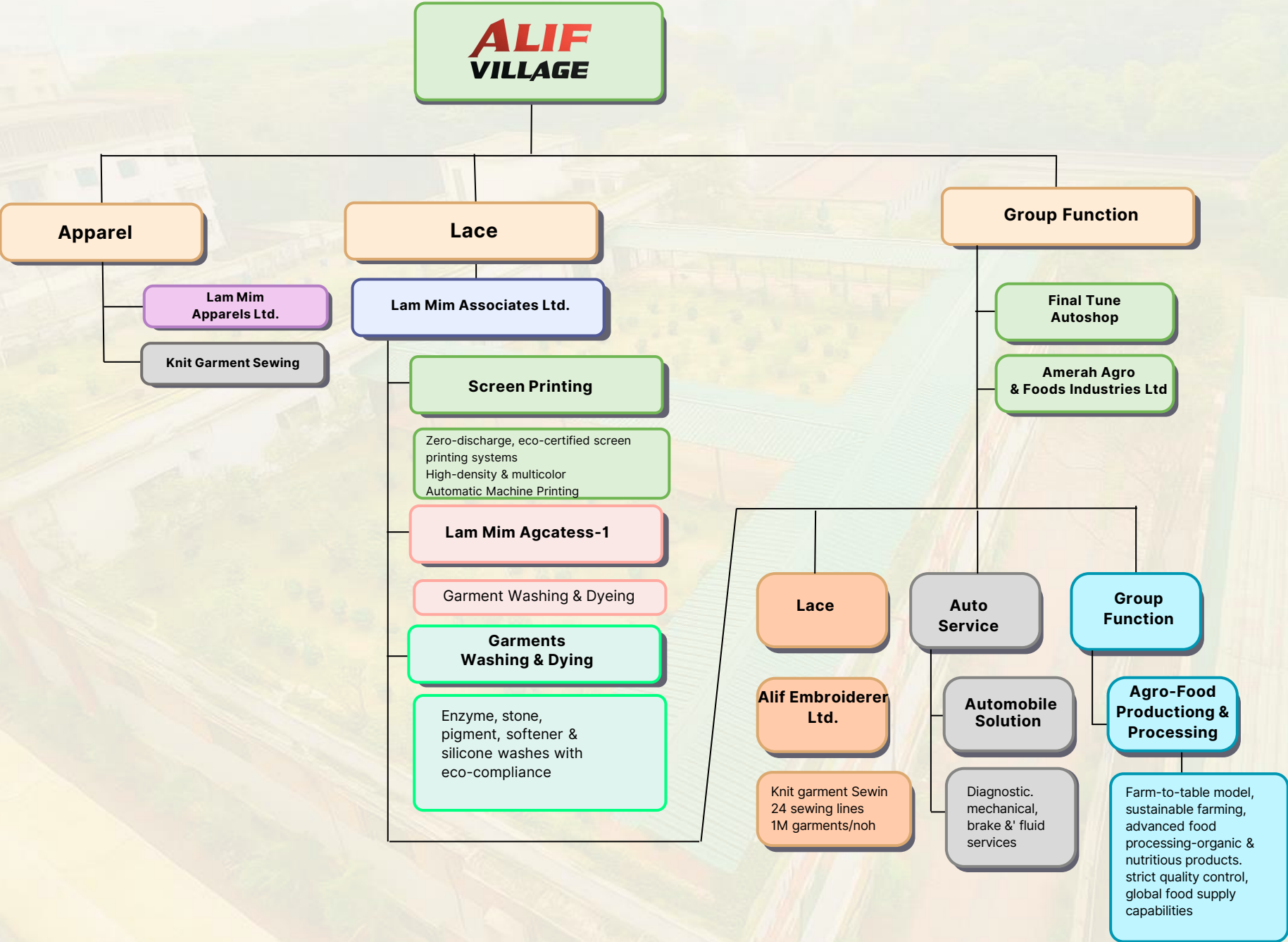
Best regards,

Fazlay Hossain Alif

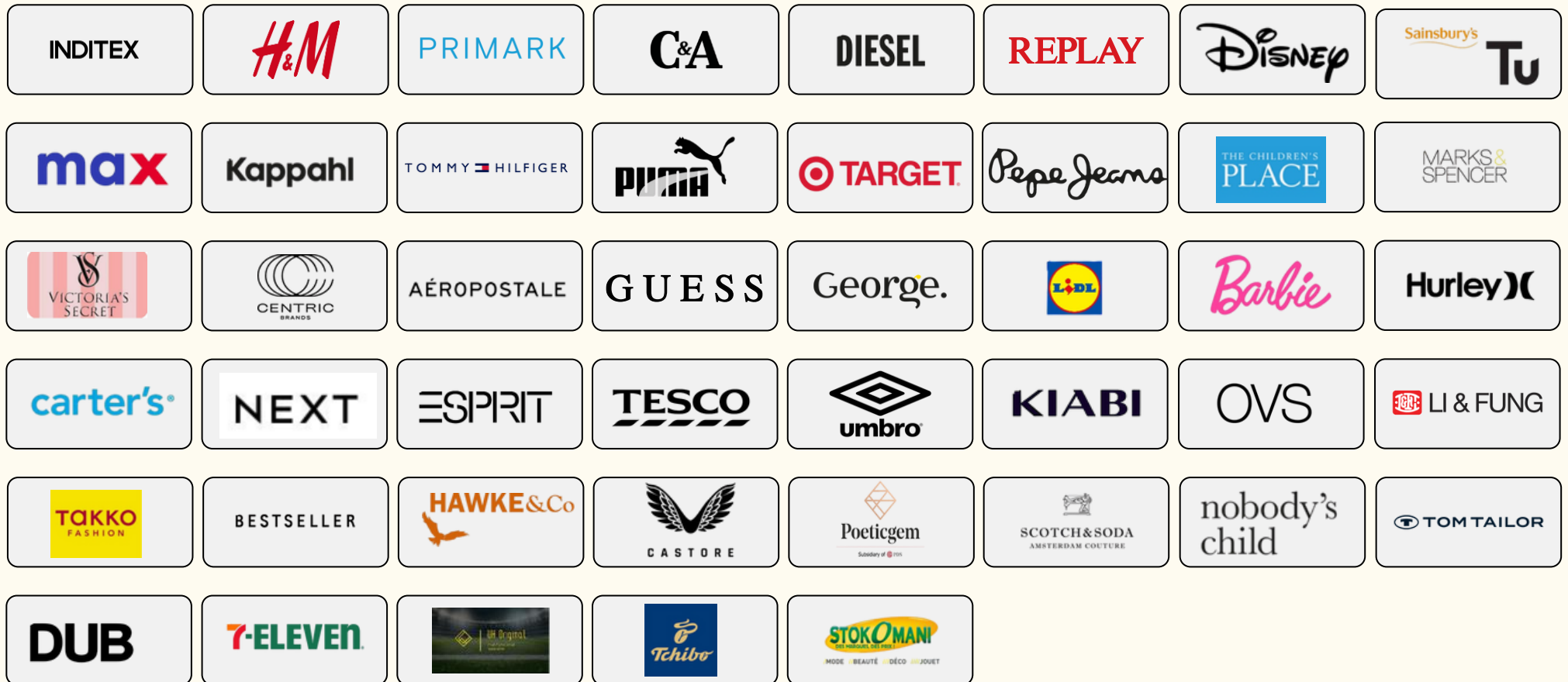
Director, Alif Village Ltd.

Unit	Specialization	Key Features
	Knit Garment	24 sewing lines, 1M garments/month
	Multihead Computerized Embroidery	150 computerized heads, appliqué, sequin, chenille, badges, laser cutting
	Lace/Schiffli, Swiss Tech Lace Production	20 double-bed Swiss embroidery machines. Cotton/poly/chemical/mesh lace, CAD-based design, design protection certificates
	Screen Printing	20 double-bed Swiss embroidery machines. Cotton/poly/chemical/mesh lace, CAD-based design, design protection certificates
	Heat Seal – Rhinestones, Rhinestuds, Pearl and Fusing attached with embossing	Zero-discharge, eco-certified screen printing systems, high-density & multi-tech, Automatic Machine Printing
IAM MIM associates-1	Garment Washing & Dyeing	Enzyme, stone, pigment, softener & silicone washes with eco compliance
	Woven and Knit Garment	1.4M garments/month capability ensures rapid and reliable order fulfilment
	Automobile Solution	Diagnostic, mechanical, brake & fluid services
Amerah Agro & Food Industries Ltd.	Agro-Food Production & Processing	Farm-to-table model, sustainable farming, advanced food processing, organic & nutritious products, strict quality control, global food supply capabilities

Group Structure



Our Featured Customers



Internationally Accredited

?????

NIRAPON





LAMMIM
APPARELS LTD

LAM MIM APPARELS LTD

Crafted with Vision — Worn with Pride

About Us

Launched in 2021, Lam Mim Apparels Ltd. is a purpose - built knit sewing facility based in Dhaka, driven by innovation, inclusion, and operational excellence. Our vertically integrated operations combine modern production technology with ethical practices, delivering premium knitwear solutions for global brands.

We are proud to be among the few garment manufacturers in Bangladesh specializing in FOB and FOC production, turning unique ideas into reality with full customization options, including fabric sourcing & development, sewing, printing, embroidery, labeling, hang tags, and packaging.

Our Capabilities :

Full Customization: Fabric sourcing & development, sewing, printing, embroidery, labeling, hang tags, and packaging.

Product Range: Sporty activewear, chic fashion wear, swimwear, outerwear, workwear, comfortable loungewear, and refined lingerie.

Production Capacity: 24 high- efficiency sewing lines producing over 1 million garments per month , including joggers, track sets, performance T - shirts, leggings, and hoodies.

Workplace & Culture :

Diverse, empowering environment with 60% women workforce, championing gender equality in Bangladesh's apparel sector. Promotes creativity, inclusion, and respect across all teams .

Trusted by Top International Brands :

In just a few years, Lam Mim Apparels Ltd. has earned the trust of leading global brands, including: Lion of Porches, Diesel, Tamnoon, Suncity, Yours Clothing, Blauer, Zalado, Daffah, UH Original, ECI, GFG, TOP TEN, and more.

Quality & Compliance

BGMEA - registered export factory (Reg. No. 6642) with ~700 machines and 900+ employees.

Certified compliance with BSCI, OEKO TEX, SEDEX, ALLIANCE/NIRAPON, CTPAT, RSC, GOTS, QMS, HIGG, SLCP, Better Work.

In - house QC teams, inline inspections, and final garment approval ensure reliable quality for global standards .



Production Timelines & Capacity

Process Stage Timeline	
Raw Material to Sample	2–3 weeks
Bulk Production	4–6 weeks after sample approval
Monthly Output	1,000,000+ units

Why Choose Lam Mim Apparels Ltd?

- Transparent costing and sampling
- Efficient scheduling and bulk delivery
- Ethical manufacturing and gender equality
- Reliable quality aligned to global retail standards

Lam Mim Apparels Ltd. is more than a factory — we are your strategic partner for knitwear excellence from Bangladesh.



Garments QC Procedures





Sewing Lines



Fabric Cutting Process



Fabric Laying / Spreading Process



Fabrics Quality Inspection



Finishing Garment Inspection



Warehouse

Product Catalog



Active Wear



For an essential product line like Casual & Fashion wear, LAMMIM offers various styles, from the very basic to the most trendy, all up to your requirements. We use natural and eco-friendly materials such as 100% Cotton, Cotton/ Spandex, Bamboo Viscose/ Spandex to produce comfortable and sustainable clothes.



Casual & Fashion wear



For an essential product line like Casual & Fashion wear, LAMMIM offers various styles, from the very basic to the most trendy, all up to your requirements. We use natural and eco-friendly materials such as 100% Cotton, Cotton/ Spandex, Bamboo Viscose/ Spandex to produce comfortable and sustainable clothes.



LAMMIM
APPARELS LTD

Kidswear

LAM MIM is committed to premium quality and highly functional wear to offer the safest and most comfortable children's clothing. We can provide a variety of specialty fabrics and kids' clothing types that are OEKO-TEX 100 Class I certified.



Workwear Uniform

Developed in line with buyer specifications, LAM MIM APPARELS produces functional workwear crafted from high-quality fabrics with advanced features like Coolmax®/Cooldry®. Built to withstand industrial wash cycles and adapt to varying weather conditions, our garments ensure sweat absorption, temperature regulation, and dependable stability for everyday performance.





ALIF EMBROIDERY VILLAGE LIMITED
Crafting Precision, Quality & Trust Since 1991

About Us

Established in 1991, **Alif Embroidery Village Ltd.** has grown from a modest embroidery setup into one of South Asia's premier embroidery manufacturing hubs. Today, the company operates two dedicated units, including Unit 2 launched in 2016, equipped with 50 state-of-the-art embroidery machines that bring the latest global technology to Bangladesh.

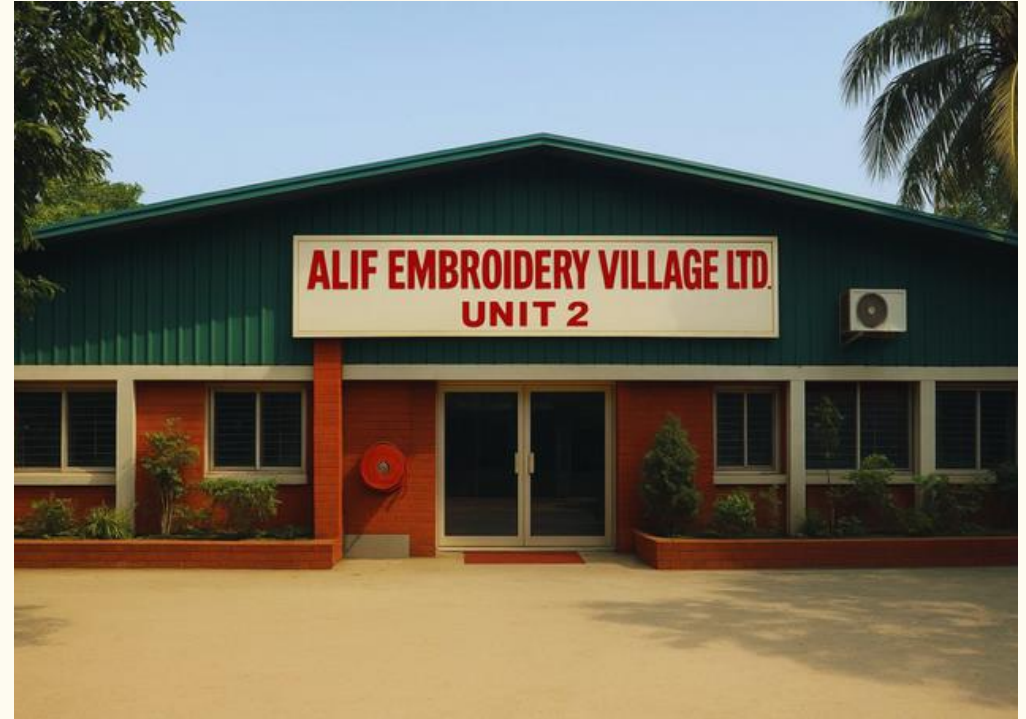
With over 150 computerized multi-head embroidery machines, we deliver scale, precision, and unmatched versatility for fashion, sportswear, lingerie, uniforms, and home textiles.

Why Choose Alif Embroidery Village

Three Decades of Excellence backed by partnerships with global brands. Modern Infrastructure with 2 units, including the advanced 2016 facility with 50 next-gen machines. Unmatched Quality Assurance through high-tech machinery and rigorous lab testing. Comprehensive Services for Eco-Friendly & Socially Responsible operations with full certification compliance. Creative design input to final finishing.

Global Reach ensuring smooth exports and reliable logistics.





Capabilities & Services:

- High-precision embroidery for garments, accessories, and value-added fashion products.
- Design development, sampling, and mass production tailored to global standards.
- Specialized finishing for fashion-forward embellishments and premium quality.

Our Promise :

We invite you to experience embroidery crafted to the highest international standards — where creativity meets precision, and reliability is second nature. At Alif Embroidery Village, we don't just add value; we stitch your vision into reality.

Technique We offer

Basic Embroidery

High-precision logo, text, motif
embellishments

Appliqué & Laser-Cut

Layered patterns, crisp laser
finishes?

Sequins, Chenille, Tufting?

Decorative textures for
premium apparel?

Machine-beads, 3D Flowers

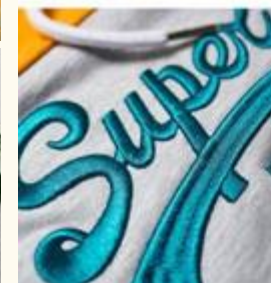
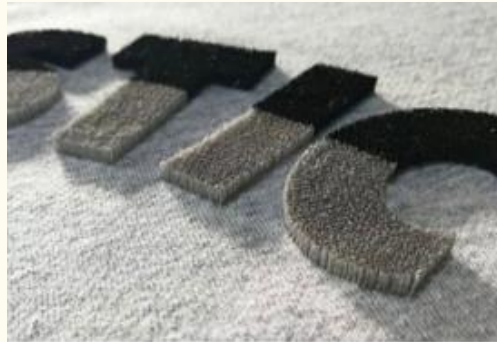
Raised luxury detailing?

Cording & Taping ?

Structured trims and piping?

Badges/Patches

Fully finished, iron/ sew-on
branded badges?



Brands Aligned with Our Embroidery Mastery







Alif Embroidery Village Ltd (Top Star Lace)
Precision Lace Craftsmanship — Since 2016



About US

In 2016, ALIF LACE took a major step forward by acquiring the Chinese company TOP STAR LACE, along with its advanced Swiss technology and updated Swiss Saurer machinery. This takeover not only expanded our technical capabilities but also gave us access to an extensive archive of over 10,000 pre-developed lace designs, enabling us to align perfectly with current fashion trends while preserving timeless classics.

Blending Swiss engineering with skilled artistry, ALIF LACE produces premium lace for fashion, lingerie, home textiles, and sleepwear. With 20 computerized double-bed Swiss Saurer machines, we deliver unmatched precision, consistency, and design quality — co-creating every piece in close collaboration with our partners.



Vission

Alif Lace envisions becoming a trusted global leader in precision lace, blending Swiss technology with sustainable practices to meet the rising demand for customizable textiles. With the lace market growing steadily at 8% annually, we are dedicated to creating innovative, eco-conscious designs that inspire brands and protect the artistry of lace craftsmanship.

Mission

Our mission is to deliver world-class lace solutions that combine design innovation, sustainability, and uncompromising quality. We empower global fashion and lifestyle brands by providing customizable lace collections, safeguarding design integrity, and ensuring ethical production every step of the way



Facility & Capabilities

- 20 double-bed Swiss embroidery machines
- Mass production + boutique flexibility
- Skilled in-house operators and designers

Creative Support

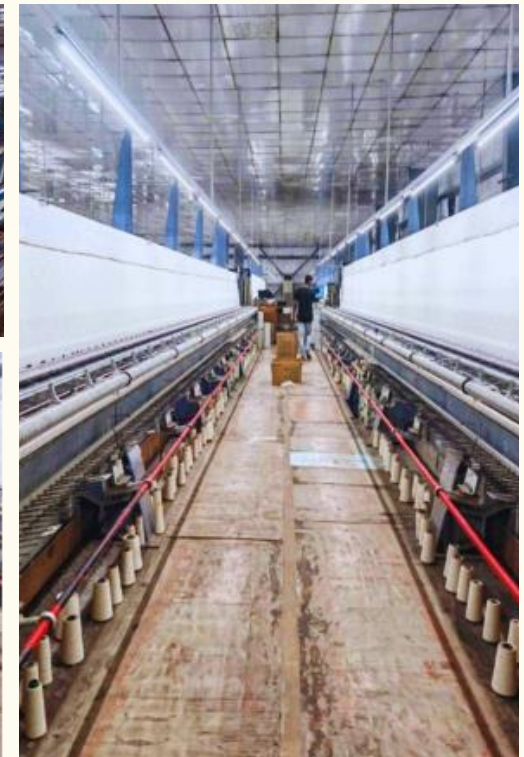
- In-house CAD Design Studio
- Digital sampling in 7-10 days?
- 10,000+ pre-developed patterns available from archives

Design Protection

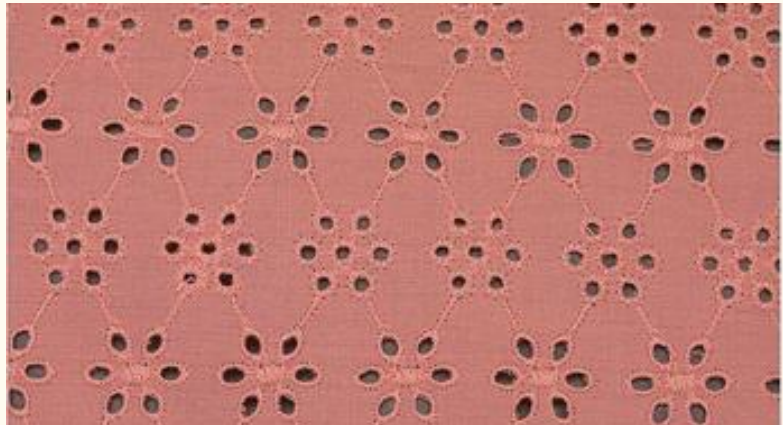
- IP-certified designs with official government certificates
- Legal protection from duplication or unauthorized use?

Production & Lead Time

- Prototype in 2-3 days?
- Bulk Production within 7 days?
- Monthly Output: 2 million meters?
- Delivery aligned with global retail calendars.?



We offer different versions of ?Allover Lace , Patch, Neck, Collar Lace , Appliqué Lace , Edging Lace ?3D Lace , Mesh & Tulle Lace , Polyester Chemical lace and more?





Our Schiffli Mastery, Trusted by Brands





LAM MIM ASSOCIATES LTD.

Elevating Screen Printing Since 2001





Creative Support

For over two decades, LAM MIM Associates Ltd. has delivered high-quality, eco-conscious screen printing solutions to top global fashion brands. Blending modern technology with skilled craftsmanship, we bring bold, precise, and sustainable prints to life.

Our facility runs high-speed automatic lines alongside manual setups, producing over 25,000 garments daily. From large orders to custom designs — we're fast, flexible, and consistent.

Sustainable & Compliant

- Zero-discharge operations with closed-loop water recycling
- Solvent-free, PVC-free inks meeting ISO 9001 & 14001 standards

Capacity & Turnaround

- Daily Output: 25,000+ pcs
- Lead Time: 20–30 business days
- Rush Orders: Available on request

Why LAM MIM?

- 20+ years of printing expertise
- Advanced, flexible production
- Sustainable, certified processes
- Trusted by leading international brands





We offer different versions of Allover Lace , Patch, Neck, Collar Lace , Appliqué Lace , Edging Lace 3D Lace , Mesh & Tulle Lace , Polyester Chemical lace and more?



Trusted Printing Partner to Global Fashion



Heat Seal & Motif Development Unit

At Alif Embroidery Village Ltd., our Heat Seal & Motif Unit delivers high-quality embellishment solutions with speed, precision, and creativity. The unit is fully equipped with:

- 15 heat seal machines
- 4 pearl & bead machines
- 2 embossing machines

We manage the entire process in-house, from design to final application, ensuring fast turnaround, consistent quality, and smooth coordination.

Key Capabilities

- **Advanced Equipment:** Impulse & constant-heat machines designed for thermoplastic textile applications
- **Premium Materials:** AAA-grade rhinestones, studs, and beads imported from Korea, China, and Hong Kong.
- **Skilled Team:** Trained designers, operators, and QA auditors ensure quality at every stage
- **Strict Quality Control:** Final checks for adhesion, finish, and alignment.

Key Capabilities

- Custom motif design & development
- Sample creation per tech pack
- Scalable bulk production
- Global shipping & delivery support

**Looking for creative, high-quality heat seal embellishments??
Partner with Alif for precision-crafted motifs that elevate your product.**



Heat Seal & Motif Development Unit





LAM MIM ASSOCIATES -1 (Washing and Dyeing)

LAM MIM Associates Ltd. operates a dedicated dyeing, washing, and winding unit offering specialized processing for yarn, lace, and fabric materials. Established to support the group's vertically integrated operations, the unit ensures consistent quality, color accuracy, and production efficiency for both internal and external orders.

Services Offered

- **Yarn Dyeing** – Precision dyeing for both synthetic and natural yarns
- **Lace & Fabric Dyeing** – Engineered to retain softness, shape, and durability
- **Winding Options** – Available in both soft-wind and hard-wind formats to suit downstream processing needs
- **Washing & Finishing** – Clean, uniform treatment that ensures material readiness for sewing or embroidery

Production Capabilities

- Modern dyeing equipment, calibrated for color consistency and repeatability
- In-house color lab for testing, matching, and approvals
- Batch handling for lace and yarns with standard turnaround and scalability
- Temperature- and pressure-controlled dyeing for better finish retention

Quality & Compliance

- All raw materials and dyeing chemicals meet export-grade safety and environmental standards
- Regular testing for colorfastness, shrinkage, and fabric/yarn integrity
- Processes aligned with group sustainability goals and international compliance standards

Contact & Collaboration

This facility works closely with both group-owned units and third-party clients. Whether for bulk yarn dyeing, lace processing, or winding services, LAM MIM Associates Ltd. provides reliable solutions tailored to your production needs.



Aerial View

ALIF
VILLAGE



Aerial View

ALIF
VILLAGE



Our Gallery

ALIF
VILLAGE



Our Gallery

ALIF
VILLAGE





Thank you !

Ready to begin your journey with us?

We'd love to hear from you and explore how we can collaborate.

Share your brand story, product details, and specific needs. The more we know, the better we can tailor solutions that fit your vision. Our team is here to support you every step of the way.

Contact Us



(+88) 09611-742115
09611-742116?



alif@aliflammim-bd.com
hossain@aliflammim-bd.com?



www.almbd.com



Bangabandhu Road, Tongabari, Ashulia,
Savar, Dhaka – 1341, Bangladesh

