



ALIF VILLAGE

INTEGRATED APPAREL SOLUTIONS • TRUSTED
WORLDWIDE SINCE 1991



Our Story

In 1991, a small embroidery venture in Dhaka began a journey that would grow into what is now **Alif Village Ltd.** It started with just a few machines and a dedicated team, united by hard work, craftsmanship, and a vision to build something lasting.

Over the years, we have steadily expanded into a leading apparel manufacturing company, operating across more than 300,000 ft² of modern production facilities. Today, our core capabilities including Knitwear Garment Manufacturing, High-Precision Embroidery, Sustainable Screen Printing, Swiss-technology Lace Production, and Garment Washing work seamlessly together to deliver complete cut-to-pack apparel solutions under one group.

Driven by efficiency, responsibility, and teamwork, we help global fashion brands transform their ideas into high-quality products with consistency, reliability, and on-time delivery.

Now led by the second generation, Alif Village Ltd. continues to uphold the values on which it was founded excellence, integrity, innovation, and care while proudly serving international fashion and retail partners who have trusted us year after year.



Mission

To deliver integrated, innovative, and sustainable solutions across apparel, lifestyle, and allied industries uniting craftsmanship, technology, and responsibility to create value for our global partners and communities.

Vision

To be a trusted global enterprise from Bangladesh, leading in apparel manufacturing and diversified solution recognized for excellence, sustainability, and innovation while shaping a stronger role for Bangladesh in the world economy.

Value

Dedication to excellence, sustainability, and innovation, creating value while caring for people and planet.

GROUP STRUCTURE

A diversified group with specialized units delivering quality, innovation & value.

ALIF VILLAGE LTD.

Building Excellence Together



UNIT	SPECIALIZATION	KEY FEATURES
 Alif Embroidery Village Ltd (Sewing Unit)	Knit Sewing Garment	24 sewing lines, 1M garments/month
 Alif Embroidery Village Ltd	Multihead Computerized Embroidery	120 computerized 20 head machine and 4 special 100 head machine capable of appliqué, sequin, chenille, badges, laser cutting etc
	Lace/ Schiffli , Swiss Tech Lace Production	20 double-bed Swiss embroidery machines. Cotton/poly/chemical/mesh lace, CAD-based design, design protection certificates
 Lam Mim Associates Ltd	Screen Printing	Zero-discharge, eco-certified screen printing systems, high-density & multi-tech, Automatic Machine Printing
	Heat Seal - Rhinestones, Rhinestuds , Pearl. and Fusing	Equipped with 15 advanced heat seal machines, 4 pearl attachment machines, and 2 embossing machine.
 Lam Mim Associates -1	Garment Washing & Dyeing	Enzyme, stone, pigment, softener & silicone washes with eco compliance
 Mehnaz Style & Craft Limited	Woven and Knit Garment	1.4 M garments/month capability ensures rapid and reliable order fulfilment
 Final Tune Autoshop	Automobile Solution	Diagnostic, mechanical, brake & fluid services
 Amerah Agro & Foods Industries Ltd	Agro-Food Production & Processing	Farm-to-table model, sustainable farming, advanced food processing, organic & nutritious products, strict quality control, global food supply capabilities



DIVERSE EXPERTISE
Multiple industries,
one strong group



QUALITY & INNOVATION
Advanced technology &
certified processes



SUSTAINABILITY
Eco-friendly practices for
a better future



CUSTOMER FOCUS
Reliable delivery,
lasting partnerships

OUR LEADERSHIP MESSAGES

Our Journey. Our Values. Our Commitment.



CHAIRMAN'S MESSAGE

When I founded Alif Village Ltd. in 1991, I could only imagine the journey ahead. From those modest beginnings, through hard work, determination, and the support of a dedicated team, we have grown into a diversified apparel group serving clients worldwide.

Today, we stand as a fully integrated manufacturing group, offering complete solutions in garments, value addition, and textile processing. Yet, what has never changed are our guiding principles — Quality, Commitment, and Responsibility — values that shape every decision and every creation we bring to life.

I take pride not only in what we produce, but also in the people and partnerships that make it possible. Looking back, I am grateful for every challenge and every achievement. Looking forward, I am inspired by the opportunities to grow, innovate, and create lasting value together.

“ Thank you for being part of our journey.

Welcome to Alif Village Ltd.

Mohammad Akter Hossain
Chairman & Managing Director



MESSAGE FROM DEPUTY MANAGING DIRECTOR

At Alif Village Ltd., we firmly believe that true progress stems from collaboration, unwavering dedication, and a unified vision.

As Deputy Managing Director, I take great pride in contributing to our ongoing journey of innovation and excellence. Working alongside our talented and committed team, we remain focused on achieving the highest standards of quality and service, with sustainability and social responsibility deeply embedded in everything we do.

I look forward to strengthening our partnerships and collaborating closely with colleagues as we continue to grow, evolve, and deliver lasting value.

“ Thank you for your continued trust and support.

Warm regards,

Omar Faroque Hafiz
Deputy Managing Director
Alif Village Ltd.



MESSAGE FROM ADDITIONAL MANAGING DIRECTOR

As part of the next generation at Alif Village Ltd., I feel honored to continue a legacy founded on hard work, trust, and innovation.

We remain dedicated to embracing modern practices and sustainable growth as we adapt to the changing needs of our global partners. While staying true to our core values, I am excited to bring fresh ideas and perspectives that help us stay competitive and ready for the future.

“ Thank you sincerely for being part of our journey.

Best regards,

Fazlay Hossain Alif
Additional Managing Director
Alif Village Ltd.



QUALITY

Highest standards in everything we do.



COMMITMENT

Dedicated to our people, partners & customers.



RESPONSIBILITY

Driving sustainability & creating positive impact.



INNOVATION

Embracing change & delivering future-ready solutions.

Our Featured Customers

INDITEX
GROUP

H&M

PRIMARK

C&A

DIESEL REPLAY

Disney

Sainsbury's

Tu

max

Kappahl

TOMMY HILFIGER

PUMA

TARGET

Pepe Jeans Suncity

THE CHILDREN'S
PLACE

MARKS &
SPENCER

AÉROPOSTALE

GUESS

George.

GAP

Barbie

—

LIDL

Hurley

VICTORIA'S
SECRET

CENTRIC
BRANDS

ESPRIT TESCO

NKD

umbro

KIABI

TOM TAILOR OVS LI&FUNG

◇

LION OF PORCHES

SCOTCH&SODA

AMSTERDAM COUTURE

TAKKO
FASHION

SOL'S
the fair spirit

NEXT

CASTORE

Poeticgem

Subsidiary of PDS

nobody's
child

carter's

BESTSELLER

UH Original
Multi-functional
wearable

Tchibo

STOKOMANI
DES MARQUES, DES PRIX!

MODE // BEAUTÉ // DÉCO // JOUET

HAWKE & Co

DUB

7-ELEVEN

Internationally Accredited

NIRAPON



Better Work



ALIF EMBROIDREY VILLAGE LTD (SEWING UNIT)

Crafted with Vision — Worn with Pride

About Our Sewing Unit

Introduction :

Established in 2021, our knit garment manufacturing facility was built to expand our apparel capabilities. Driven by innovation, operational excellence, and ethical manufacturing, we combine modern production technology with skilled craftsmanship to deliver premium knitwear solutions for global brands.

We are proud to be among the few garment manufacturers in Bangladesh specializing in FOB and FOC production, turning unique ideas into reality with full customization options, including fabric sourcing & development, sewing, printing, embroidery, labeling, hang tags, and packaging.

Our Capabilities :

Full Customization: Fabric sourcing & development, sewing, printing, embroidery, labeling, hang tags, and packaging.

Product Range: Performance gear for athletes, fashion pieces for trendsetters, cozy loungewear for home, and durable work wear for everyday life. Key items include T-shirts, joggers, leggings, hoodies, track sets, outerwear, and swimwear.

Production Capacity: 24 high-efficiency sewing lines producing over 1 million garments per month.

Workplace & Culture :

Diverse, empowering environment with 60% women workforce, championing gender equality in Bangladesh's apparel sector. Promotes creativity, inclusion, and respect across all teams.



Quality & Compliance

BGMEA registered export factory (Reg. No. 6642) with 700 machines and 900+ employees.

Certified compliance with BSCI, OEKO TEX, SEDEX, ALLIANCE/NIRAPON, CTPAT, RSC, GOTS, QMS, HIGG, SLCP, Better Work. In-house QC teams, inline inspections, and final garment approval ensure reliable quality for global standards.

Production Timelines & Capacity

Process Stage	Timeline
Raw Material to Sample	2–3 weeks
Bulk Production	4–6 weeks after sample approval
Monthly Output	1,000,000+ units

Why Choose Alif Sewing?

- Transparent costing and sampling
- Efficient scheduling and bulk delivery
- Ethical manufacturing and gender equality
- Reliable quality aligned to global retail standards

Our Sewing Unit is more than a factory we are your strategic partner for knitwear excellence from Bangladesh.



Garment QC Procedures



-  **QUALITY ASSURED**
Ensuring high standards at every stage.
-  **PROCESS DRIVEN**
Systematic checks for consistent quality.
-  **PEOPLE FOCUSED**
Empowering our team for excellence.
-  **CUSTOMER CONFIDENCE**
Delivering reliable products you can trust.

Sewing Lines



Fabric Cutting Process



Fabric Laying / Spreading Process



Fabrics Quality Inspection



Finishing Garment Inspection



Warehouse



Male Fashion Categories



Male Fashion Categories



Female Fashion Categories



Female Fashion Categories





Kidswear

Committed to premium quality and functionality, we produce safe, comfortable, and durable children's wear. Our range includes garments made from specialty fabrics that meet the stringent requirements of OEKO-TEX® Standard 100 Class I certification, ensuring the highest level of safety for infants and children.

KidsWear



Product Catalog -- Middle East Market



Active Wear

Focused on innovation and product diversity, we develop a wide range of activewear designed for modern fit, unrestricted movement, and lasting comfort. Our collection includes leggings, sports bras, T-shirts, polo shirts, hoodies, base layers, and lightweight outerwear suitable for all seasons.



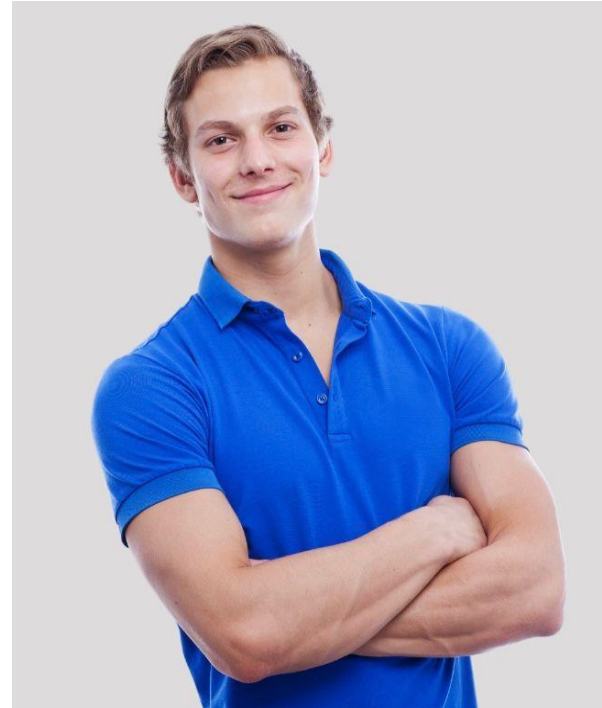


Casual & Fashion wear

For our Casual & Fashion Wear product line, we offer a wide range of style from timeless basics to the latest fashion trends tailored to meet your requirements. Using premium natural and eco-friendly materials such as 100% Cotton, Cotton/Spandex, and Bamboo Viscose/Spandex, we create comfortable, high-quality, and sustainable garments.

Workwear Uniform

Developed to meet buyer specifications, our functional workwear is crafted from high-performance fabrics featuring advanced technologies such as Coolmax® and Cooldry®. Designed to withstand industrial wash cycles and diverse working environments, our garments provide excellent moisture management, temperature regulation, durability, and all-day comfort.





ALIF EMBROIDERY VILLAGE LIMITED

Crafting Precision, Quality & Trust Since 1991

About Us

Established in 1991, Alif Embroidery Village Ltd. has grown from a small embroidery workshop into one of South Asia's leading embroidery manufacturers. With two production units and over 100 plus computerized multi-head embroidery machines, we deliver high-quality embroidery solutions for fashion, sportswear, lingerie, uniforms, home textiles, bags, caps, and more. From design development and digitizing to sampling and bulk production, we provide reliable, innovative, and precision-driven embroidery services for global brands.

Why Choose Alif Embroidery Village

- 30+ Years of Industry Experience
- Complete Services from design development to bulk production
- Advanced Specialty Embroidery Techniques
- Strict Quality Control & Global Compliance
- Reliable Delivery with International Standards



Facility & Infrastructure

- * 30,600 sq. ft. modern production facility
- * 120 computerized multi-head embroidery machines
- * 4 UNIX Promaker special 100 head embroidery machines
- * Skilled in-house designers, digitizers, programmers, and operators
- * High production capacity with consistent quality and flexible delivery



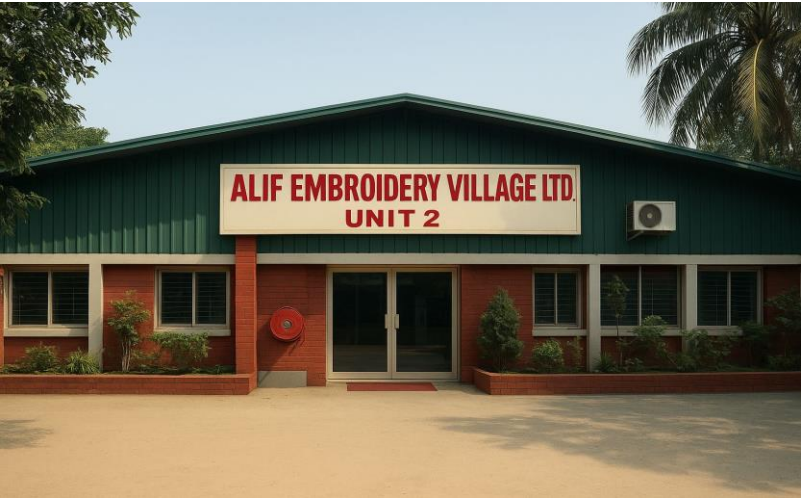
Capabilities & Services

- * Premium embroidery for Knit, Woven, Denim, Sweaters, Home Tex and fashion accessories including bags, caps, and socks
- * In-house design development, digitizing, sampling, and bulk production
- * Expertise in specialty embroidery techniques with strict quality control
- * Reliable on-time delivery with consistent quality, meeting international standards



Our Promise

At **Alif Embroidery Village**, we combine advanced technology, skilled craftsmanship, and dependable service to deliver precision embroidery with consistent quality. We are committed to turning every design into a product that exceeds customer expectations.



Embroidery Quality Process

In Line QC



Trimming Section



QC Inspection Table



Needle Distribution Area



Needle Detection Area



Finishing Area



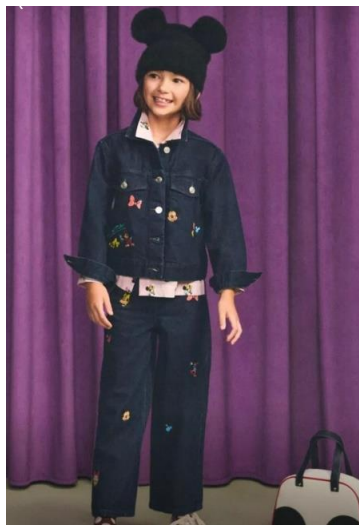
Technique We offer
Basic Embroidery
High-precision logo, text, motif embellishments
Appliqué & Laser-Cut
Layered patterns, crisp laser finishes
Sequins, Chenille, Tufting
Decorative textures for premium apparel
Machine-beads, 3D Flowers
Raised luxury detailing
Cording & Taping
Structured trims and piping
Badges/Patches
Fully finished, iron/ sew-on branded badges



SHOT ON REDMI K30
AI QUAD CAMERA

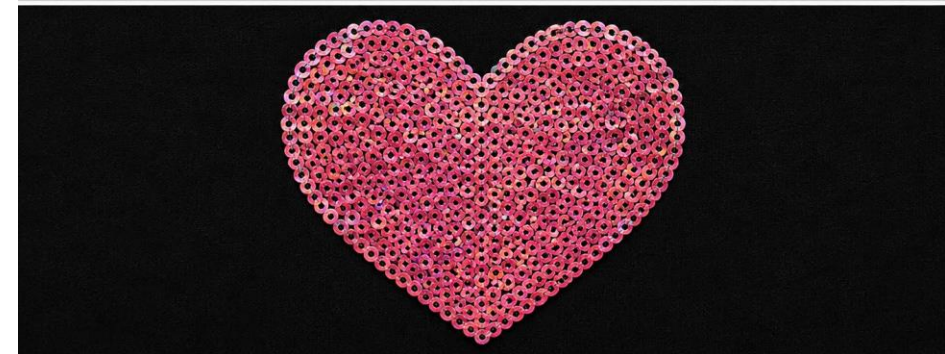
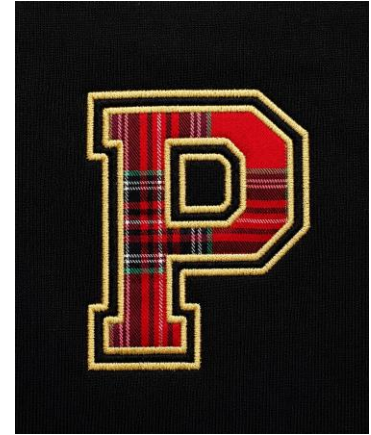
Brands Aligned with Our Embroidery Mastery







VS EMBLISHMENT WITH ALIF



Alif Embroidery Village Ltd (Lace)

Precision Lace Craftsmanship — Since 2016

In 2016, Alif Embroidery Village , achieved a major milestone by acquiring the renowned Chinese manufacturer TOP STAR LACE, along with its advanced Swiss technology and upgraded Swiss Saurer machinery. This strategic expansion significantly enhanced our technical capabilities and provided access to an extensive archive of over 10,000 pre-developed lace designs, enabling us to stay aligned with global fashion trends while preserving timeless classics. Today, blending Swiss engineering with Bangladeshi craftsmanship, Alif Village Schiffl produces premium lace for:

- Fashion apparel
- Lingerie
- Home textiles
- Occasion wear
- Sleepwear

Vision

“Alif Lace envisions becoming a trusted global leader in precision lace, blending Swiss technology with sustainable practices to meet the rising demand for customizable textiles. With the lace market growing steadily at 8% annually, we are dedicated to creating innovative, eco-conscious designs that inspire brands and protect the artistry of lace craftsmanship.”

Mission

“Our mission is to deliver world-class lace solutions that combine design innovation, sustainability, and uncompromising quality. We empower global fashion and lifestyle brands by providing customizable lace collections, safeguarding design integrity, and ensuring ethical production every step of the way.”



Facility & Capabilities

- * 26600 SFT Production area
- * 20 double-bed Saurer Schiffli Embroidery Machine
- * High-volume production and flexibility
- * Expert in-house operators, programmers, and designers
- * Fully integrated production flow for speed, precision, and cons

Creative Support

- In-house CAD Design Studio
- Digital sampling in 7–10 days
- 10,000+ pre-developed patterns available from archives

Design Protection

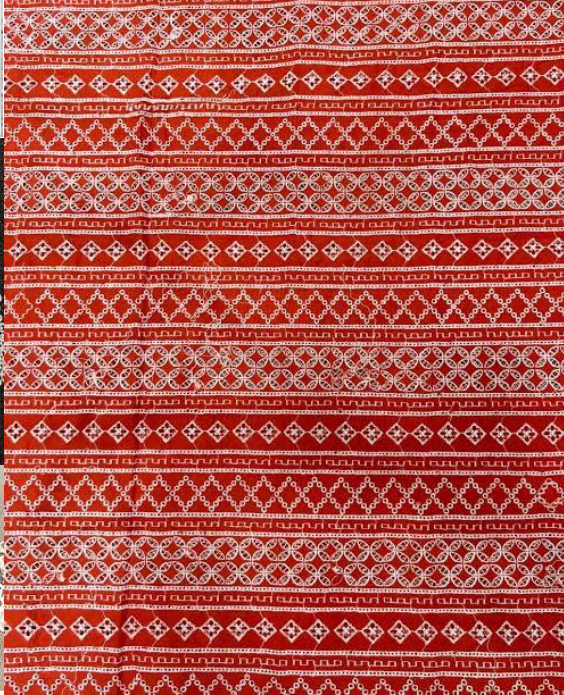
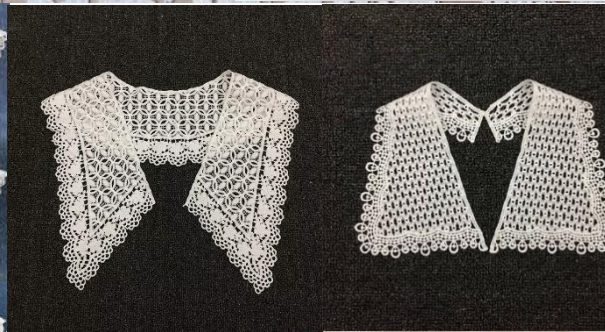
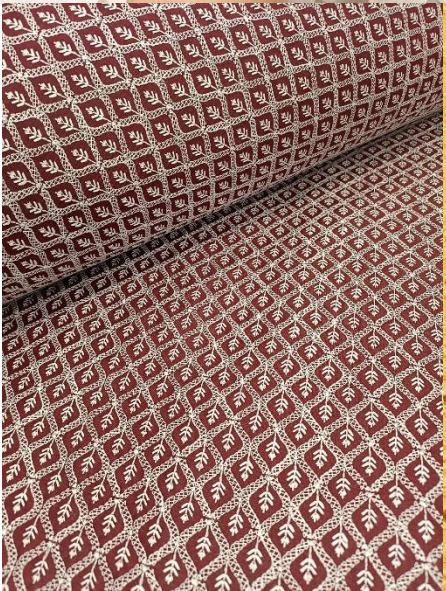
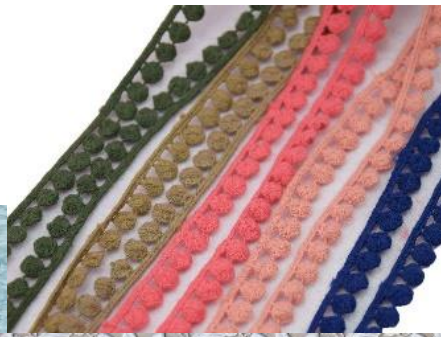
- IP-certified designs with official government certificates
- Legal protection from duplication or unauthorized use

Production & Lead Time

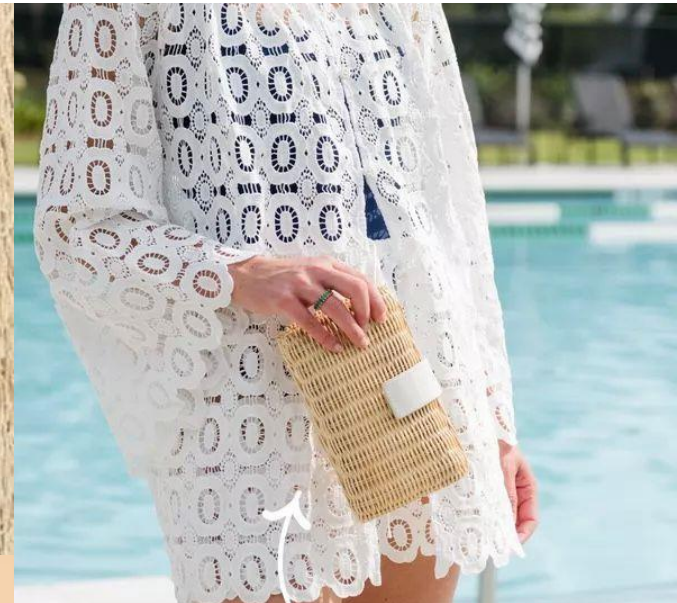
- Prototype in 2–3 days
- Bulk Production within 7 days
- Monthly Output: 2 million meters
- Delivery aligned with global retail calendars.



We offer different versions of
Allover Lace , Patch, Neck, Collar Lace , Appliqué Lace , Edging Lace
3D Lace , Mesh & Tulle Lace , Polyester Chemical lace and more



Our Schiffli Mastery, Trusted by Brands







LAM MIM ASSOCIATES LTD.

Elevating Screen Printing Since 2001

For over two decades, LAM MIM Associates Ltd. has delivered high-quality, eco-conscious screen printing solutions to top global fashion brands. Blending modern technology with skilled craftsmanship, we bring bold, precise, and sustainable prints to life.

Our facility runs high-speed automatic lines alongside manual setups, producing over 25,000 garments daily. From large orders to custom designs — we're fast, flexible, and consistent.

Sustainable & Compliant

- Zero-discharge operations with closed-loop water recycling
- Solvent-free, PVC-free inks meeting ISO 9001 & 14001 standards

Capacity & Turnaround

- Daily Output: 25,000+ pcs
- Lead Time: 20–30 business days
- Rush Orders: Available on request

Why LAM MIM?

20+ years of printing expertise

Advanced, flexible production

Sustainable, certified processes

Trusted by leading international brands



Color Kitchen Room



Green Certified ETP



Techniques We Offer

3D Puff , High-Density, Metallic,
Glitter, Glow-in-the-Dark, CMYK
Photoprint ,Water-Based, Plastisol,
Eco Inks & more.



Trusted Printing Partner to Global Fashion





Heat Seal & Motif Development Unit

At Lam Mim Associates Ltd., our Heat Seal & Motif Unit delivers high-quality embellishment solutions with speed, precision, and creativity. The unit is fully equipped with:

- 15 heat seal machines
- 4 pearl & bead machines
- 2 embossing machines

We manage the entire process in-house, from design to final application, ensuring fast turnaround, consistent quality, and smooth coordination.

Key Capabilities

- **Advanced Equipment:** Impulse & constant-heat machines designed for thermoplastic textile applications
- **Premium Materials:** AAA-grade rhinestones, studs, and beads imported from Korea, China, and Hong Kong.
- **Skilled Team:** Trained designers, operators, and QA auditors ensure quality at every stage
- **Strict Quality Control:** Final checks for adhesion, finish, and alignment.

What We Offer

- Custom motif design & development
- Sample creation per tech pack
- Scalable bulk production
- Global shipping & delivery support

Looking for creative, high-quality heat seal embellishments? Partner with Alif for precision-crafted motifs that elevate your product.



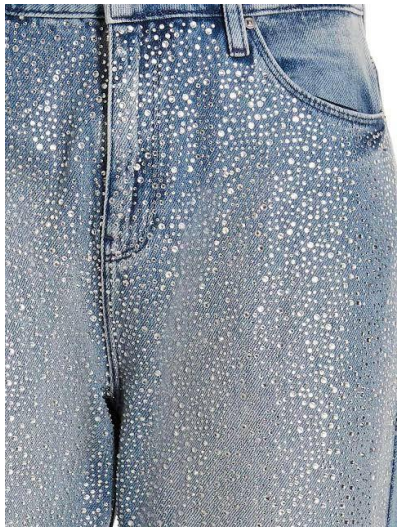
Crafting Sparkle for Global Brands

Trusted by leading international brands, including KIABI, Takko Fashion, George, Morrisons, GUESS , GEMO , MONOPRIX , H&M, C&A and many more.









LAM MIM ASSOCIATES -1 (Washing and Dyeing)

Yarn, Lace & Fabric Dyeing | Soft & Hard Winding Services

LAM MIM Associates Ltd. operates a dedicated **dyeing, washing, and winding unit** offering specialized processing for **yarn, lace, and fabric** materials. Established to support the group's vertically integrated operations, the unit ensures consistent quality, color accuracy, and production efficiency for both internal and external orders.

Services Offered

- **Yarn Dyeing** – Precision dyeing for both synthetic and natural yarns
- **Lace & Fabric Dyeing** – Engineered to retain softness, shape, and durability
- **Winding Options** – Available in both soft-wind and hard-wind formats to suit downstream processing needs
- **Washing & Finishing** – Clean, uniform treatment that ensures material readiness for sewing or embroidery

Production Capabilities

- Modern dyeing equipment, calibrated for color consistency and repeatability
- In-house color lab for testing, matching, and approvals
- Batch handling for lace and yarns with standard turnaround and scalability
- Temperature- and pressure-controlled dyeing for better finish retention

Quality & Compliance

- All raw materials and dyeing chemicals meet export-grade safety and environmental standards
- Regular testing for colorfastness, shrinkage, and fabric/yarn integrity
- Processes aligned with **group sustainability goals** and **international compliance standards**

Application Areas

- Knitwear and woven garment production
- Lace and embroidery integration
- Home textiles and trims
- Apparel accessories requiring custom-dyed inputs

Contact & Collaboration

This facility works closely with both group-owned units and third-party clients. Whether for bulk yarn dyeing, lace processing, or winding services, LAM MIM Associates Ltd. provides reliable solutions tailored to your production needs.



Thank you for watching!

Ready to begin your journey with us?

We'd love to hear from you and explore how we can collaborate.

Share your brand story, product details, and specific needs. The more we know, the better we can tailor solutions that fit your vision. Our team is here to support you every step of the way.

ALIF VILLAGE LTD

Bangabandhu Road, Tongabari, Ashulia, Savar, Dhaka – 1341,
Bangladesh

 **Phone:** (+88) 09611-742115, 09611-742116

 **Email:** alif@aliflammim-bd.com | hossain@aliflammim-bd.com

 **Website:** www.almbd.com

